

**KIDS
EAT
FREE ON
TUESDAYS***

Black-eyed Pea®

COLORADO



Help Andi find her way down the mountain.

4.99

Includes entrée, one side, one drink, and one mini dessert.

SIDES

- Sweet Kernel Corn
- Mashed Potatoes
- Glazed Carrots
- Green Beans
- French Fries
- Black-eyed Peas
- Fried Okra
- Steamed Broccoli
- Cornbread Dressing
- Seasoned Rice
- Baked Squash Casserole
- Broccoli & Rice Casserole

ENTRÉES

- Slow-Cooked Pot Roast
- Grilled Chicken Breast
- Fried Chicken Fingers
- Turkey Dinner
- Mom's Meat Loaf
- Cheese Burger
- Pasta Marinara
- Mac & Cheese
- Mini Corn Dogs
- Grilled Cheese Sandwich
- Cheese Sticks

MINI DESSERTS

- Mini Sundae or Banana Pudding

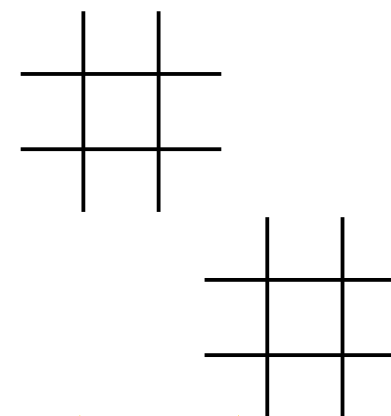
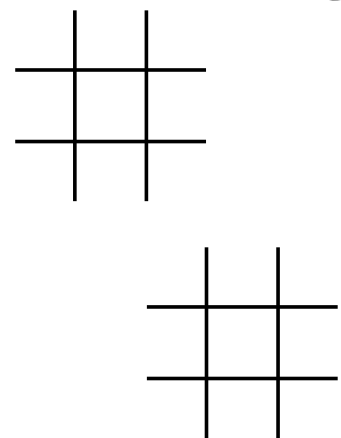
DRINKS

- Orange Juice
- Apple Juice
- Lemonade
- Soft Drink
- Ice Tea
- Milk

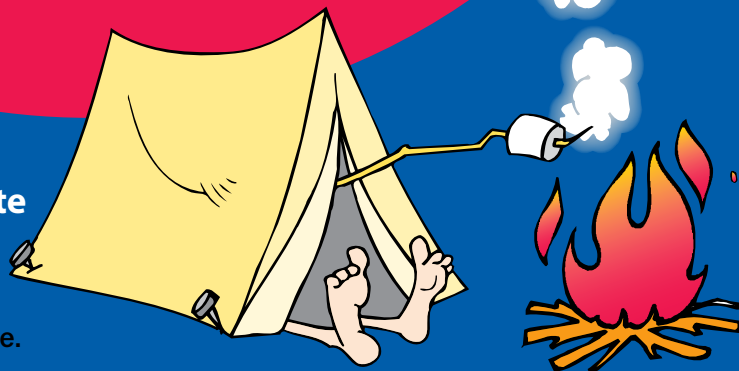
CAN YOU FIND THESE COLORADO WORDS?

G	S	K	I	I	N	G	A	E	O	L	W	G	I	K
F	E	N	C	J	N	L	D	Y	A	S	N	O	E	C
I	K	F	O	I	R	G	B	K	O	I	W	F	A	B
P	P	D	T	W	B	P	I	D	K	E	T	M	A	L
M	L	F	J	G	C	N	G	I	S	G	P	N	S	U
O	A	M	U	L	G	N	H	V	P	I	C	S	P	E
R	R	O	C	K	Y	M	O	U	N	T	A	I	N	S
F	K	F	L	X	W	K	R	G	N	E	K	I	A	P
I	B	U	A	S	P	E	N	M	B	E	C	U	I	R
S	U	T	H	J	R	B	S	N	S	J	L	N	S	U
H	N	E	C	D	I	A	H	P	H	A	E	F	L	C
I	T	O	L	K	Z	U	E	R	R	Y	N	R	O	E
N	I	Y	I	A	R	A	E	N	K	W	H	L	U	H
G	N	N	S	Q	K	Y	P	A	F	O	P	Y	N	K
S	G	T	M	U	C	E	N	I	B	M	U	L	O	C

FINISH



The colors used in the Colorado State Flag represent environmental features of the state. The gold represents the abundant sunshine enjoyed by the state. The blue symbolizes the clear blue skies of Colorado. White represents the snow capped mountains of the state and red represents the color of much of the state's soil.



- ASPEN
- BIGHORN SHEEP
- BIKING
- BLUE SPRUCE
- CAMPING
- COLUMBINE
- FISHING
- HIKING
- LAKE
- LARK BUNTING
- PIKES PEAK
- PINE
- RAFTING
- ROCKY MOUNTAINS
- SKIING
- SNOW

**DID YOU KNOW
COLORADO
HAS 300 DAYS
OF SUNSHINE
EACH YEAR?**

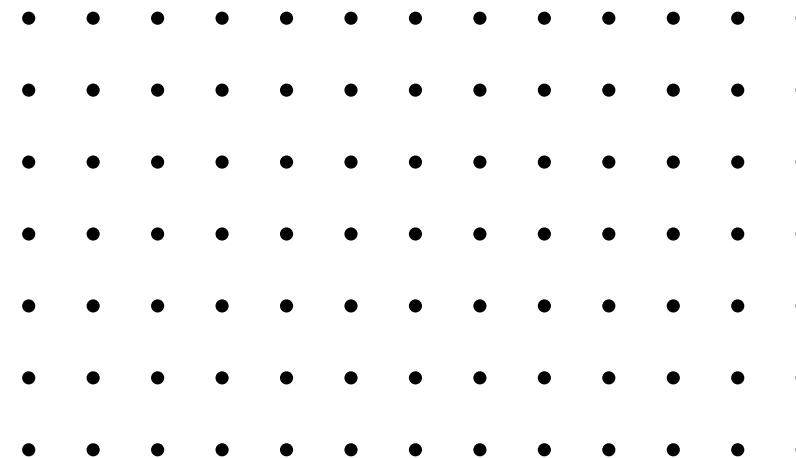
*With the purchase of every adult entrée, a meal from the Kids Menu is free. Valid for kids age 12 and under. Valid Tuesdays all day. Dine in Only

UNSCRAMBLE THE FUN ACTIVITIES TO DO IN COLORADO

IFSH _____	MPCA _____
COKR MLCBI _____	TMAOUNNI KIBE _____
KEHI _____	OBSWDONAR _____
	FRAT _____
	LNGLOAONBI _____
	KSI _____

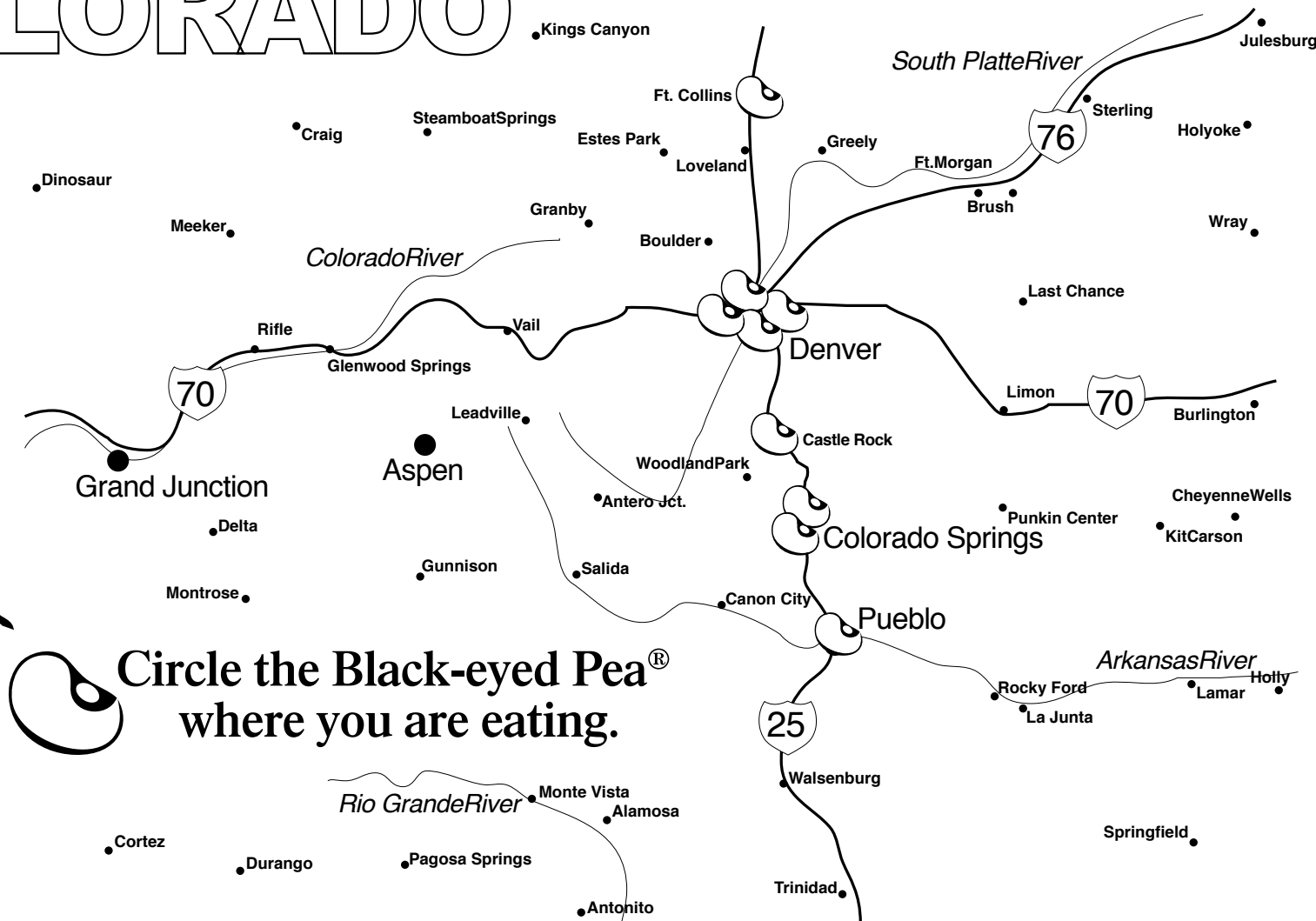


THE BIGHORN SHEEP IS COLORADO'S STATE ANIMAL



THE COLUMBINE IS COLORADO'S STATE FLOWER AND THE LARK BUNTING IS THE STATE BIRD.

COLORADO



**Circle the Black-eyed Pea[®]
where you are eating.**